



## OVERVIEW AND SCRUTINY COMMITTEE

Meeting: Monday, 6th March 2017 at 6.30 pm  
in Civic Suite, North Warehouse, The Docks, Gloucester, GL1 2EP

### ADDENDUM

This item was provided for on the agenda and supplementary material was received from partners prior to the meeting.

3.	<p><b>UPDATE ON DEPLOYMENT OF RESOURCES FROM COMMUNITY SAFETY PARTNERSHIP AND THE SUPERINTENDENT FOR LOCAL POLICING (PAGES 5 - 44)</b></p> <p>To receive a verbal update from the Community Safety Partnership and the Superintendent for Local Policing regarding their strategy to reduce crime in the City and the deployment of police and PCSO's in Gloucester.</p> <p><b>*Please note that Any Public Questions, Petitions and Deputations must relate to the business for which the Special Meeting has been called.*</b></p>
----	--

Yours sincerely

**Jon McGinty**  
Managing Director

## NOTES

### Disclosable Pecuniary Interests

The duties to register, disclose and not to participate in respect of any matter in which a member has a Disclosable Pecuniary Interest are set out in Chapter 7 of the Localism Act 2011.

Disclosable pecuniary interests are defined in the Relevant Authorities (Disclosable Pecuniary Interests) Regulations 2012 as follows –

<u>Interest</u>	<u>Prescribed description</u>
Employment, office, trade, profession or vocation	Any employment, office, trade, profession or vocation carried on for profit or gain.
Sponsorship	Any payment or provision of any other financial benefit (other than from the Council) made or provided within the previous 12 months (up to and including the date of notification of the interest) in respect of any expenses incurred by you carrying out duties as a member, or towards your election expenses. This includes any payment or financial benefit from a trade union within the meaning of the Trade Union and Labour Relations (Consolidation) Act 1992.
Contracts	Any contract which is made between you, your spouse or civil partner or person with whom you are living as a spouse or civil partner (or a body in which you or they have a beneficial interest) and the Council (a) under which goods or services are to be provided or works are to be executed; and (b) which has not been fully discharged
Land	Any beneficial interest in land which is within the Council's area.  For this purpose "land" includes an easement, servitude, interest or right in or over land which does not carry with it a right for you, your spouse, civil partner or person with whom you are living as a spouse or civil partner (alone or jointly with another) to occupy the land or to receive income.
Licences	Any licence (alone or jointly with others) to occupy land in the Council's area for a month or longer.
Corporate tenancies	Any tenancy where (to your knowledge) – (a) the landlord is the Council; and (b) the tenant is a body in which you, your spouse or civil partner or a person you are living with as a spouse or civil partner has a beneficial interest
Securities	Any beneficial interest in securities of a body where – (a) that body (to your knowledge) has a place of business or land in the Council's area and

- (b) either –
- i. The total nominal value of the securities exceeds £25,000 or one hundredth of the total issued share capital of that body; or
  - ii. If the share capital of that body is of more than one class, the total nominal value of the shares of any one class in which you, your spouse or civil partner or person with whom you are living as a spouse or civil partner has a beneficial interest exceeds one hundredth of the total issued share capital of that class.

For this purpose, “securities” means shares, debentures, debenture stock, loan stock, bonds, units of a collective investment scheme within the meaning of the Financial Services and Markets Act 2000 and other securities of any description, other than money deposited with a building society.

NOTE: the requirements in respect of the registration and disclosure of Disclosable Pecuniary Interests and withdrawing from participating in respect of any matter where you have a Disclosable Pecuniary Interest apply to your interests and those of your spouse or civil partner or person with whom you are living as a spouse or civil partner where you are aware of their interest.

#### **Access to Information**

Agendas and reports can be viewed on the Gloucester City Council website: [www.gloucester.gov.uk](http://www.gloucester.gov.uk) and are available to view five working days prior to the meeting date.

For further details and enquiries about this meeting please contact Tanya Davies, 01452 396125, [tanya.davies@gloucester.gov.uk](mailto:tanya.davies@gloucester.gov.uk).

For general enquiries about Gloucester City Council’s meetings please contact Democratic Services, 01452 396126, [democratic.services@gloucester.gov.uk](mailto:democratic.services@gloucester.gov.uk).

If you, or someone you know cannot understand English and need help with this information, or if you would like a large print, Braille, or audio version of this information please call 01452 396396.

#### **FIRE / EMERGENCY EVACUATION PROCEDURE**

If the fire alarm sounds continuously, or if you are instructed to do so, you must leave the building by the nearest available exit. You will be directed to the nearest exit by council staff. It is vital that you follow their instructions:

- You should proceed calmly; do not run and do not use the lifts;
- Do not stop to collect personal belongings;
- Once you are outside, please do not wait immediately next to the building; gather at the assembly point in the car park and await further instructions;
- Do not re-enter the building until told by a member of staff or the fire brigade that it is safe to do so.

**This page is intentionally left blank**

# Agenda Item 3

## Gloucester Community Safety Partnership Briefing for Overview and Scrutiny Monday 6<sup>th</sup> March.

Safer Gloucester, the Gloucester City Community Safety Partnership is made up of the City Council, Gloucestershire Constabulary, County Council, National Probation Service, BGS&W Community Rehabilitation Company, Gloucestershire Fire and Rescue and NHS Gloucestershire.

The Partnership has been in existence since 1999 and brings together agencies to reduce crime and the fear of crime.

The Partnership aims to work with the Police and Crime Commissioner (PCC) to deliver on his priorities. Over the last 12 months Safer Gloucester has achieved the following:

### Accessibility and Accountability

- 4 News Letters were sent out during the year to inform residents and businesses in Gloucester about the activities of the Partnership and to raise awareness of the Partnership and its work.
- The Partnership has its own website which informs people of their activities and gives access to important information about crime prevention.
- Paws on Patrol was held on 7<sup>th</sup> May 2016. This is an annual event to promote awareness of crime and the work of the Safer Gloucester Partnership. In addition members of the Partnerships Leadership group are in attendance and use the opportunity to talk to attendees and listen to their concerns about crime and community safety. This event will held again this year on 20<sup>th</sup> May.
- The Partnership held its annual Christmas Crime Prevention event on 7<sup>th</sup> December in 2016 in Kings Walk. Information and tips on crime prevention as well as the Safer Gloucester year planner were handed out and members of the Partnership were available to listen to passers-by who wanted to share their concerns about crime and the fear of crime.

### Older but not Overlooked

- Halloween can be harmless fun, but sometimes members of the community can become distressed by unexpected callers. Safer Gloucester has produced some posters which are available on the website for people to download and put in their windows to ask people not to call at their house.
- Paws on Patrol membership scheme is 5 this year and as well as being the topic of one Safer Gloucester's events its members operate 24/7. The initiative aims to reduce the opportunities for crime and anti-social behaviour to occur, reduce the fear of crime especially in the vulnerable and build a community spirit where dog walkers can contribute toward the protection of their neighbourhood.

### Young People becoming Adults

- Tragically there have been several incidents of knife crime in the County. On 1<sup>st</sup> October 2016 the Partnership in order to raise awareness of the dangers of carrying knives with young people, launched a new initiative "Your knife or your life" at the Skillzone. 20 young people attended a workshop to consider not just how dangerous knives are, but also the effects of a fatal stabbing on the friends and family of the victim and perpetrator. The event also included some first aid and self-preservation training. It is planned that this training will be run every 3 months.

## **Gloucester Community Safety Partnership Briefing for Overview and Scrutiny Monday 6<sup>th</sup> March.**

### **Safer Days and Nights for All**

- In February the Partnership hosted a seminar, called Project Argus, for shops and retailers in the City on a simulated terrorist attack. This was a follow up to one that was run for Licensees in December 2015. The seminar informed businesses about what they and their staff may need to do in helping prevent and survive a terrorist attack or other catastrophe like flooding, fire, explosions or major disaster.
- In 2015 the City Council introduced and ran its first Best Bar None award scheme for licensed businesses. In February last year the team, which included the co-ordinators and winners from each active scheme, were invited to a reception at the House of Lords where they received the award for Best New Scheme.
- In 2015 the City Council installed a new CCTV system in the City Centre. New high definition cameras were installed along with free WiFi and improved 4G connectivity. One of the major benefits of the new camera system is the improvement to image quality, as well as 360 degree movement capabilities. Following a number of successes, Police Chiefs praised the new system as being a decisive part in the prosecutions. In November 2016, at the Global MSC Conference in Bristol Gloucester won the Gordon McLanaghan Award for Innovation in the Security Industry.
- During 2016 the City Council adopted a Safe and Attractive Street Policy which covers issues of street drinking, rough sleeping, begging and legal highs. This policy follows an engage, support and enforce structure with help from Street Link, Project Solace, the City Centre Police Team and the City Council. Monitoring of the situation continues to be undertaken daily and there have been a number of successes with some beggars moving into supported housing enabling them to access appropriate services. Further measures such as a Public Space Protection Order (PSPO) and Social Impact Bond (SIB) are being explored as additional measures to help eradicate these issues.
- On 29<sup>th</sup> November the Safer Gloucester Partnership ran an event to promote awareness of Domestic Abuse. Dr Jane Monckton-Smith presented a lecture 'Are you afraid of someone? Understanding Coercive control, stalking and homicide'. The lecture was really well supported and attended by more than 150 people.
- In December on the Safer Gloucester website the Partnerships has an advent calendar to encourage people to interact with it and at the same time pick up advice on how to stay safe over the Christmas period. Each day leading to Christmas there is a different seasonal crime prevention message.

### **Safer and Social Driving**

- The Safer Gloucester assisted the Licensed Victuallers Association (LVA) in promoting an initiative 'Be a Clive this Christmas'. Those that signed up to the initiative offered free soda to drivers if they show their car keys at the bar. Some members of the LVA have also decided to continue this initiative after the Festive Season.

### **Safer Cyber Crime**

- The 9<sup>th</sup> February 2015 was Safer Internet Day. The Partnership put together 'Top Tips for Safer Social Networking' which can be found on the Safer Gloucester Website.

Update from Superintendent Cooper regarding current deployment levels

Information received on 3<sup>rd</sup> of March 2017

There are currently 59 police constables whose duties are specifically labelled as the local policing of Gloucester. This includes 5 constables who are in training but are not yet deployable. There are 27 PCSOs whose duties are exclusively concerned with Gloucester.

A further one constable and PCSO provide a specialist anti-social behaviour response for Gloucester as part of Operation Solace.

There are further 105 constables whose role is to attend and resolve incidents in Gloucester and Cheltenham.

There are 16 special constables in Gloucester and 29 attached to the urban incident resolution team. In the past 6 months these special constables have contributed over 6500 hours of duty.

There are a plethora of roles who contribute to the policing of Gloucester as part of their duties, but I can elaborate on those on Monday.

The most recent change to these numbers was the movement of 4 PCSOs from Cheltenham to Gloucester in October last year.

**This page is intentionally left blank**





---

# Safer Gloucester Strategy

---

2014 - 2017



---

# I. Welcome from the Chair of Safer Gloucester

---

Safer Gloucester was pleased to welcome a further 4.85% reduction in overall crime in the year 2013/14. This was the culmination of the hard work of Gloucestershire Constabulary and Gloucestershire Probation Trust as well as the effective partnership working of local agencies and members of the community that has been building since 1998.

There have been many changes to the Community Safety landscape over the past two years, particularly the election of Gloucestershire's first Police and Crime Commissioner, Martin Surl. Many agencies within the Community Safety Partnership have undergone significant restructuring, and are attempting to find new ways to minimise the effects of budget savings to the community. Funding that is required to perform the Community Safety function locally is awarded to Police and Crime Commissioners to allocate.

Gloucestershire's PCC has designated six priorities in the Gloucestershire Police and Crime Plan 2013 - 2017:

- Accessibility and Accountability
- Older but not overlooked
- Young People Becoming Adults
- Safer Days and Nights for All
- Safe and Social Driving
- Safer Cyber.

Safer Gloucester is working with the PCC to deliver on these priorities and achieve his aim of 'Less Crime, More Peace'. We know that crime and feeling safe matter to our residents. Our key task is to keep Gloucester safe and we will do that by:

- Prevention - it is better to stop something from happening than to try and fix it after the event
- Protection - protect people, property and places by undertaking a range of statutory and enforcement duties
- Response - providing a response if an emergency occurs – not just attending fires, road traffic collisions, flooding but also response services for domestic and sexual abuse, drug and alcohol treatment and anti social behaviour.

Safer Gloucester is committed to reducing crime and its impact on communities and this plan is an expression of the commitment we will make to working together. Where possible, we will be applying an asset based approach to delivering community safety in Gloucester.



**Cllr Jennie Dallimore**

Deputy Leader and Cabinet Member for  
Communities & Neighbourhoods



## Contents

1. Welcome from the Chair of Safer Gloucester **p3**
2. Vision statement **p5**
3. Background **p5**
4. Legislative changes **p7**
5. Priorities **p7**
  - Safer Gloucester Targets **p8**
  - Accessibility and Accountability **p10**
  - Older but not overlooked **p11**
  - Young people becoming adults **p12**
  - Safer days and nights for all **p13**
  - Safe And Social Driving **p15**
  - Safer cyber **p15**
6. Partners **p16**

---

## 2. Vision Statement

---

Safer Gloucester is committed to working in partnership to reduce crime, the fear of crime and anti social behaviour effectively and efficiently. In doing so, it will be inclusive and empowering of the community it serves.

---

## 3. Background

---

There are legal requirements that apply to community safety partnerships. They are an important feature of the network of partnerships that help to tackle crime. In Gloucester, the Community Safety Partnership is called Safer Gloucester, and the responsible authorities are Gloucester City Council, Gloucestershire County Council, the Police, Health (Clinical Commissioning Groups), Gloucestershire Probation Trust and Gloucestershire Fire and Rescue Service.

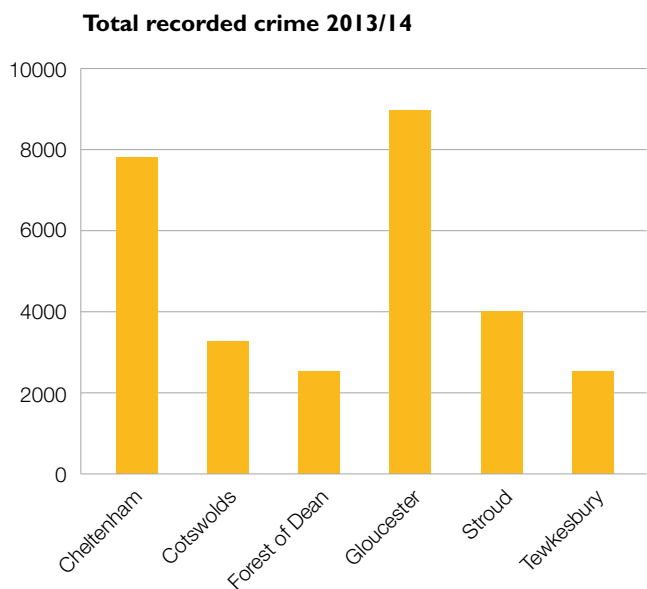
**The responsible authorities are under a statutory duty to work together to:**

- **Tackle crime and disorder**
- **Tackle anti social behaviour**
- **Tackle alcohol and substance misuse**
- **Tackle any other behaviour which has a negative effect on the local environment.**

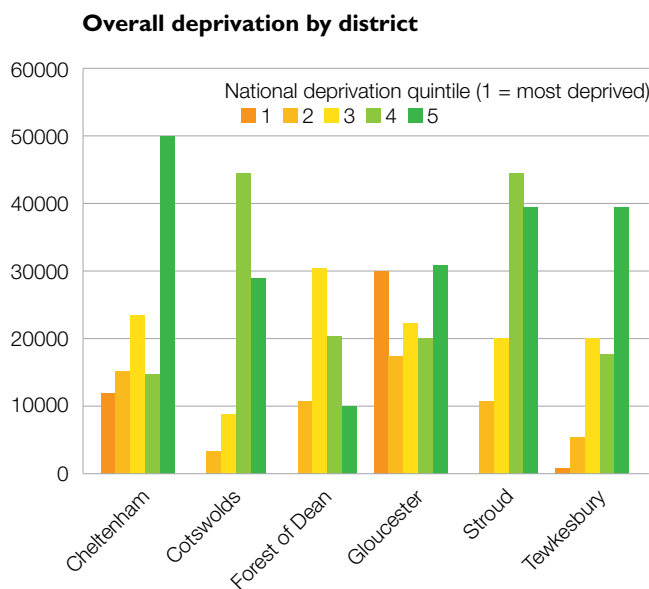
The Partnership's first strategy was written in 1999 and has been reviewed on a regular basis since that time. The strategy for the next three years is aligned to the Gloucestershire Police and Crime Commissioner's Plan. The Commissioner's Office has contributed to Safer Gloucester which delivers local initiatives reflecting the objectives contained within the Commissioner's plan, proactively targeting seasonal crime trends and responding reactively to crime spikes where possible.

Gloucester has historically suffered from higher rates of crime compared to the County average (see Fig. 1). It is also the district with the greatest levels of deprivation (see Fig. 2). Indices from 2010 (based on pre-recession data from 2008) revealed that five of Gloucester's neighbourhoods are amongst the 10% Most Deprived in England, with nearly a quarter of Gloucester residents qualifying as being in the Most Deprived 20% of England's Neighbourhoods.

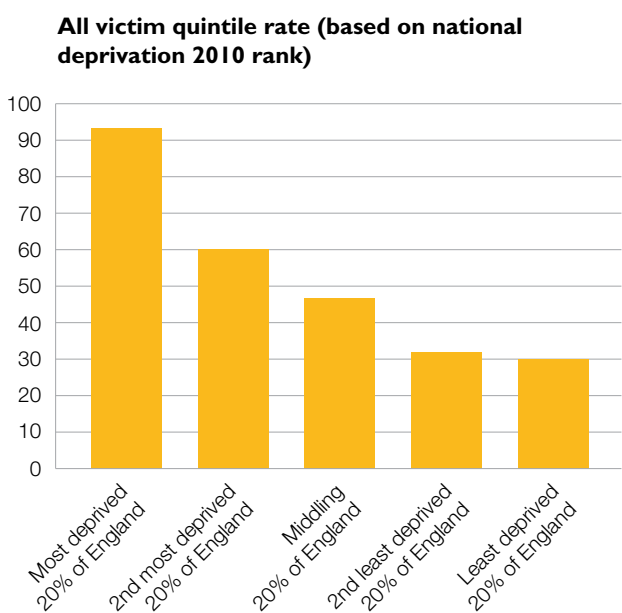
The link between deprivation and crime has been acknowledged (see Fig 3), and with a higher number of residents in Gloucester living in areas of deprivation, they are therefore at greater risk of becoming a victim of crime. Despite this correlation, crime in Gloucester has been reducing over the period of time the Community Safety Partnership has been active, and partners have worked hard to reduce the number of people affected by crime. However, this is an ongoing challenge, crime levels fluctuate and still too many residents in Gloucester will become victims.



**Fig 1:** Inform Gloucestershire data 12 months rolling total of all recorded crime in 2013/14.



**Fig 2:** Inform Gloucestershire data for the County deprivation levels. 1 = most deprived 20% of England's neighbourhoods.



**Fig 3:** Inform Gloucestershire data highlighting the higher probability of becoming a victim of crime if living in a deprived neighbourhood (90 per 1000 population).

**We have found that by working as a Partnership we are able to:**

- Respond to problems
- Encourage inter-agency working
- Involve communities
- Generate new ideas
- Obtain and coordinate resources from multiple sources
- Connect with the Public

---

## 4. Legislative changes

---

Transforming Rehabilitation will bring about a legislative change for Community Safety Partnerships (CSPs) in 2014 with the abolition of Probation Trusts and the creation of Community Rehabilitation Companies (CRCs) and the National Probation Service (NPS).

Both CRCs and the NPS will be designated as responsible authorities under section 5 of the Crime and Disorder Act 1998 in the contracts, and therefore subject to the statutory requirements to participate in CSPs.

They will be expected to fully meet their statutory responsibilities to these partnerships as it will be a key forum for providers to participate in and integrate with wider partners.

The Home Office Anti-social Behaviour Crime and Policing Act 2014 will come into force during 2014 introducing new measures to help focus the response to anti-social behaviour and the needs of victims, including the Community Trigger; which will enable individuals and communities to ask for their case to be reviewed if they feel that an issue has not been satisfactorily resolved.

---

## 5. Priorities

---

The overarching priority of Safer Gloucester is to reduce crime and the fear of crime in Gloucester.

We will continue to work together, building on previous successes, to proactively prevent crime from happening in our communities, particularly through awareness raising of crime prevention methods, our website and newsletters. We will also work in partnership to react to any crime spikes and halt any unexpected trends or increases.

Priorities for Safer Gloucester are decided through analysis of recorded crime and through consultation with local communities. In 2013/14, the crime areas that have been identified as significant are criminal damage, serious acquisitive crime, shoplifting and assault with less serious injury (associated with the city centre on Friday and Saturday nights). In addition, Safer Gloucester will seek to address issues of vulnerability, for example, involvement in gang culture and extremism.

Results of the Police public perception survey indicated that 73.2% of the residents who were asked, agreed or strongly agreed that the Police and Local Authority were dealing with the crime and anti social behaviour issues that mattered in the previous twelve months (December 2013).

Our work, for the period of this strategy, will include reducing acquisitive crime, anti social behaviour; the harm caused to individuals and communities by drugs and alcohol misuse, raising awareness of the means of reporting domestic abuse and sexual violence and hate crime and the services available to support victims of those crimes.



Paws on Patrol



Dangers of social media

## Safer Gloucester Targets

### Crime Reduction

#### In 2014 – 2017 we will:

- Work to reduce domestic burglary and theft from motor vehicles
- Conduct seasonal crime prevention campaigns throughout the year
- Raise awareness of crime prevention techniques with residents, businesses and other agencies
- Hold “Have your say” events in different localities in the city, addressing the priorities raised
- Seek to increase “Paws on Patrol” members to 1,500, encouraging dog owners in Gloucester to be the eyes and ears of their respective communities
- Work to reduce harm from offending behaviour to the communities of Gloucester; continuing to monitor and reduce levels of reoffending
- Work to raise awareness of the dangers of social media.

### Anti Social Behaviour

#### In 2014 – 2017 we will:

- Implement the new Anti-social Behaviour tools and powers from October 2014 including the Community Trigger and Community Remedy focussing the responses on the needs of victims
- Make a first contact with an anti social behaviour complainant within 24 hours of Project Solace receiving the initial complaint
- Agree an action plan with the complainant within one working day for serious and 5 days for minor anti social behaviour incidents
- Work together in the Anti-social Behaviour Steering Group to resolve the more serious anti-social behaviour affecting our communities on a multi agency basis
- Share information between partners to assess the potential risk to victims and take the necessary action, with particular emphasis on identifying repeat victims and coordinating a multi agency response
- Increase the awareness and raise the profile of Project Solace to residents, partner agencies and private sector landlords within the City.





Support young people and adults



Continue to target police operations

## Reduce the Harm Caused by Alcohol and Illegal Drugs

### In 2014 – 2017 we will:

- Coordinate review meetings with the treatment and support agencies to explore the issues of their clients, seeking to address points of concern
- Work to raise awareness of the services able to support young people and adults
- Work to ensure that residents and visitors to Gloucester city centre on a Friday and Saturday night are and feel safe, focussing resources into any area that is causing concern
- Work to develop initiatives to make Gloucester a safer city and seek Purple Flag status
- Work to target resources using data collected as part of the Cardiff Model for violence prevention, which involves data between the Safer Gloucester agencies about the location of violence, type of weapon used, assailants and date/time of incident
- Continue to target police operations to tackle and break the cycle of drugs and crime using partnerships with other police forces to disrupt serious organised crime where necessary.

## Domestic Abuse and Sexual Violence

### In 2014 – 2017 we will:

- Raise awareness of the services available to victims of domestic abuse and sexual violence
- Support the services to victims of domestic abuse and sexual violence
- Work to improve the attitudes of young people towards healthy relationships
- Raise awareness of Forced Marriage, Honour Based Violence and Female Genital Mutilation in schools, both with pupils and staff
- Seek to provide training opportunities to professionals.

## Hate Crime

### In 2014 – 2017 we will:

- Support the enhancement of third party reporting of hate crimes and incidents in order to increase confidence in the criminal justice system amongst minority groups
- Work to strengthen and increase the "Keep Safe" scheme across the city for residents with learning disabilities
- Promote community cohesion and value the diversity of the city.

The following pages outline some of the present and planned initiatives of Safer Gloucester, showing how they are also firmly embedded within the Police and Crime Commissioner's objectives as detailed on page 3.



Barton & Tredworth Cultural Fayre



Clock Tower Park Fun Afternoon



Paws on Patrol

## Accessibility and Accountability

**Outcome:** Residents will have an increased awareness of the work of the partner agencies and the support that is available.

Examples of activity that we have done and will continue to do to achieve this outcome include:

### Have Your Say Days

Officers from Safer Gloucester and members of the community visit residents' homes, responding to and supporting community needs and involving local residents in the response to issues of concern.

### Community Events

Safer Gloucester organises and attends community events throughout the year, across the city, giving crime prevention advice and information, answering residents' concerns, reporting issues to partner agencies and signposting to support services where possible.

### Website

Safer Gloucester regularly updates the website [www.safergloucester.co.uk](http://www.safergloucester.co.uk) with news of events, projects and crime prevention advice and information.

### Safer Gloucester Newsletters

Safer Gloucester produces quarterly newsletters containing details of recent and forthcoming events, crime trends and crime prevention advice and information. These are distributed across Gloucester to key agencies' reception areas and doctor and dentist reception areas. Safer Gloucester also contributes articles of latest news to Cascade, the Neighbourhood Watch Newsletter and Tenant's Times, the news sheet of Gloucester City Homes to its tenants.





Christmas party for older people

Older people's events

## Older but not overlooked

**Outcome:** Older people feel valued as active members of our communities. Victims of hate crime will feel confident to report.

### Rogue Trader Information

Safer Gloucester works towards raising awareness of bogus traders, advising older people not to open their front doors to unexpected strangers. Safer Gloucester promotes the use of "Nominated Neighbour" cards to vulnerable people and also distributes Rogue Trader packs to older residents giving information of how to protect themselves against bogus callers.

### Christmas Party for Older People

Safer Gloucester hosts a Christmas party for older people living in the Kingsholm and Wotton area of the city, giving crime prevention advice and information appropriate to their lifestyles, amid cream teas, Christmas quizzes and seasonal singing. This popular event is supported by Gloucestershire Older Person's Association.

### Third Party Reporting of Hate Crime

It is widely recognised that hate crimes and incidents are very much under reported. Gloucester will pilot a scheme to encourage third party reporting of hate crime and incidents for those people who do not wish to make reports direct to the Police. This will assist in informing Safer Gloucester of crime trends and lead to awareness raising of support mechanisms.

### Lifelink

Lifelink provides peace of mind to people of any age enabling them to feel safer, more protected and independent in their own homes. The scheme is operated by Safer Gloucester's partner, Gloucester City Homes and serves 1,950 people throughout the city.

### Older People's Events

Safer Gloucester is keen to attend information events specifically for older people and can provide crime prevention advice for residents to help them feel safer and enable them to protect themselves and their property.



Schools football tournament



Mini motos project

## Young people becoming adults

**Outcome:** Young people will be encouraged to make positive lifestyle choices and recognised for the contribution that they make.

Examples of activity that we have done and will continue to do to achieve this outcome include:

### Police and Community (PAC) Scheme

Safer Gloucester is committed to working with local young people from the community encouraging them to get to know the Local Police Team, City Ward Councillors and other leaders from the community, including the post master or mistress from the local post office, a youth worker and religious leader. The scheme, for Year 6 pupils in Barton, Tredworth and White City will build relationships and help to reduce anti social behaviour.



### Positive Tickets

Safer Gloucester encourages young people to become positive adults by rewarding behaviour that goes above and beyond the call of duty in their community. They can be nominated by their schools or a member of their family or community and receive a positive ticket for free entry to a leisure interest or activity. Safer Gloucester thanks all the businesses who are supporting this initiative in the city.

### Schools Football Tournament

Police Community Support Officers and students from the University of Gloucestershire organise an annual seven a side football tournament for Years 5 and 6 pupils from the Primary Schools in Gloucester. Sport breaks down barriers in the community and encourages the children to work together.

### Mini Motos Project

To combat the number of complaints of anti social and illegal riding of mini motorbikes, Safer Gloucester contributed to a multi agency initiative to provide a track where children and young people can ride around legally and in safety.

### Avenger Task Force

Safer Gloucester is working to reduce the numbers of young people who are involved in gang related violence by offering support to those who are or may be vulnerable. A multi agency team lead by the Police, including Probation, Youth Service and Social Care work together to support the young people at risk. Young people are encouraged to take part in a programme called Great Expectations, involving mentoring and ensuring that participants understand the risks and consequences of being involved in crime.



CCTV



Paws on Patrol

## Safer days and nights for all

**Outcome:** Total reported crime and incidents of Anti Social Behaviour will continue to reduce in Gloucester.

Examples of activity that we have done and will continue to do to achieve this outcome include:

### **Closed Circuit Television (CCTV)**

Gloucester deploys a network of CCTV cameras across the city centre to prevent and detect crime. Over the next three years, the cameras will be upgraded and replaced by a state of the art system. Safer Gloucester also deploys mobile CCTV cameras to hotspot areas of crime and anti social behaviour across the city.

### **Project Solace**

Through Project Solace, a team from Gloucestershire Constabulary, Gloucester City Council and Gloucester City Homes, we will provide a robust service to tackle high level anti social behaviour regardless of tenure. We will work with partner agencies and local communities to provide a holistic, effective and swift service.

### **Paws on Patrol**

Dog owners are encouraged to join the very successful Paws on Patrol scheme and report any issues they may see whilst walking their dogs. They spend a lot of time out and about in their community and are likely to notice when something out of the ordinary is happening. Patrollers are asked to report any suspicious activity to help reduce crime and issues like fly tipping, graffiti, litter and anti social behaviour, thus improving the quality of life for all. Mascots, Ace and Holly from the Police Dog Section assist with messages to residents on Twitter and make appearances at community events to encourage membership further. To date we have over 1,100 members but we would like to recruit more.

### **Domestic Abuse**

Domestic Abuse is taken very seriously and a zero tolerance approach is taken by the local police officers. Safer Gloucester has produced a booklet to support anyone whose relationship, or family life has become intolerable. The booklet includes all the support agencies and information on creating a safety plan. All the agencies of Safer Gloucester work together to raise awareness of the support available to victims and local businesses, schools and faith groups are encouraged to advertise the local Domestic Abuse Support Service to their staff, members and clients.

### **Violent Extremism**

Gloucester City Council will continue a programme for its front-line professionals to recognise vulnerable people who are at risk of being drawn into violent extremism. We will also offer training for partners and communities.



Crime Prevention Awareness Raising



"Have Your Say" Days

## Safer days and nights for all

### City Safe

Safer Gloucester has focussed on making the city centre safer and feeling safer on Friday and Saturday evenings, with new improved lighting in Eastgate Street, a renewed city centre CCTV system and the pedestrianisation of Eastgate Street on Friday and Saturday nights.

The success has been recognised and supported by the Police and Crime Commissioner who has funded a City Safe Manager to expand the work to include the daytime economy and the introduction of a Yellow Card scheme to reduce anti social behaviour. Many city centre businesses have joined City Safe and operate the yellow card scheme; anyone receiving two such cards is banned from all operating premises and some public transport.

### Crime Prevention Awareness Raising

Safer Gloucester raises awareness of low cost means of crime prevention at all community events and in specific campaigns eg Operation Switch to combat the increase in domestic burglary in the autumn when the clocks change and evenings are darker; Sheducation, a crime prevention initiative targeting shed and garden crime in the Springtime, student advice in the autumn and holiday and Christmas crime prevention targeting domestic burglary and car crime.

### "Have Your Say" Days

Whenever a "hotspot" for crime or anti social behaviour emerges, Safer Gloucester will visit the area and speak to as many residents as possible asking for their views on the problem and also on the solution to the problem. Any possible remedies are put in place and the affected residents notified.

### Hello Gloucester

Gloucester City Council has joined in partnership with GreenSquare Housing, Gloucester City Homes and the Police and Crime Commissioner to purchase a van that would aid community engagement across Gloucester. The van, entitled Hello Gloucester, is being converted into a mobile office and will be used at events, either by individual agencies or together in partnership, at community events, critical incidents and training and consultation exercises.



Beer goggles Go-Karting



Safer Cyber

## Safe and social driving

**Outcome:** Residents will have an increased awareness of the effects of alcohol on driving abilities.

Examples of activity that we have done and will continue to do to achieve this outcome include:

### Beer Goggles Go-Karting

Gloucestershire Road Safety Partnership take the lead on initiatives to train and encourage safe and social driving but Safer Gloucester also lead at times with projects like the Beer Goggles Go-Karting to highlight the dangers of driving under the influence of alcohol. The project emphasised the length of time the body needs to absorb alcohol and the dangers of driving the morning after a night out.

## Safer cyber

**Outcome:** Residents will have an increased understanding of the need to protect themselves online, particularly when using social networking sites.

Examples of activity that we have done and will continue to do to achieve this outcome include:

### Safer Social Networking

Safer Gloucester is concerned about the safety of residents using the social networking sites and is working to raise awareness of the dangers involved. We have produced a Safer Social Networking leaflet and some wristbands stating "When you press send, where will it end?" These will both be distributed at events attended by the Safer Gloucester team and also by police officers who are leading on a crime prevention programme in schools dealing with the dangers of sexting and sending revealing photographs on the internet.

Safer Gloucester is committed to both working proactively to raise awareness and prevent crime from taking place as well as reacting in partnership to address crime spikes.

---

## 6. Partners

---

Safer Gloucester would like to acknowledge and thank the contributions made by our partners, all of whom assist in making Gloucester a safer place to live work and visit.

2gether NHS Foundation Trust	Gloucester Guildhall
Amey plc	Gloucester Licensed Victuallers Association
Andy Cars	Gloucester Museums
ASDA	Gloucester Review
Aspire Sports and Cultural Trust	Gloucester Street Pastors
Associated Taxis	Gloucestershire Action for Asylum Seekers and Refugees
Bar Fever	Gloucestershire College
Bromford Housing	Gloucestershire Domestic Abuse Support Service
Butler's Venue Bar	Gloucestershire Domestic Violence and Advocacy Project
Café René	Gloucestershire Older Person's Association
Cheltenham Town Football Club	Gloucestershire Rape and Sexual Abuse Centre
Concession Cirkitz International	Gloucestershire Royal Hospital
Crown Prosecution Service South West	Gloucestershire Youth Service
Dick Whittington Farm Park	GreenSquare Group
Eastgate Cycles	Guinness Hermitage
Friends of St James' Park	Heart FM
GAY-GLOS	Independent Community Members
Gloucester Citizen	Infobuzz
Gloucester City Homes	ISIS Women's Centre
Gloucester City Safe	Jollyes Pet Food Superstores
Gloucester FM	



Lead-on Pets  
Leeds Building Society  
Lighthouse Children's Centre  
Liquid Nightclub  
Marketing Gloucester  
Neighbourhood Partnership Members  
Neighbourhood Watch Association  
Oxbode Housing Association  
PamPurred Pets  
Paws on Patrol Members  
Pets at Home  
Project Solace  
Radio Gloucestershire  
Rooftop Housing  
Royal Canin  
Sainsbury's  
Severn Tae Kwon-Do  
Simms Security Solutions  
South West Snooker Academy  
Stagecoach West  
Stonham Housing  
Strategic Domestic Abuse and Sexual Violence Coordinator  
Tesco Stores  
The Lady and The Tramp Grooming Salon and Spa  
The Registry  
The Royal Agricultural University  
The Salvation Army  
The Warehouse Climbing Centre  
The Wood Veterinary Group  
Two Rivers Housing  
University of Gloucestershire  
Victim Support  
Wessex Garages  
Wetherspoons

This document is available at  
**[www.safergloucester.co.uk](http://www.safergloucester.co.uk)**







[www.safergloucester.co.uk](http://www.safergloucester.co.uk)



## Paws on Patrol - back May 7th !

Paws on Patrol is returning to Gloucester Park on Saturday 7th May 2016!

The event will start at 12 noon and will feature our fabulous Paws on Patrol mascots Police attack dog Ace and search dog Holly and their colleagues and handlers to show off their skills and how they work so hard to keep us safe.



We are delighted to welcome the return to the arena of Meirion Owen and the Quack Pack from Carmarthenshire. Meirion is a very accomplished and well respected sheepdog handler who started sheepdog trialling at the age of nine. He has won many trials including the Welsh National Sheepdog Championship and appears regularly on television appearing on the BBC's "One Man and His Dog", "Countryfile" and "The One Show".

On 7th May Meirion will be demonstrating the amazing talents of his sheepdogs who will guide a herd of Indian Runner ducks around a course that includes tunnels, slides and pens. His demonstrations are informative, educational and highly entertaining. They are interactive, allowing hands-on audience participation.



The bookings are arriving from businesses and local charities who are eager to attend this ever popular event—keep an eye on the Safer Gloucester website for details as it is being updated regularly.

🐾🐾🐾🐾🐾🐾🐾🐾🐾🐾🐾🐾🐾🐾🐾🐾🐾🐾🐾🐾🐾🐾🐾🐾

**Save the date—**

**7th May 2016**

**in Gloucester Park:**

**Safer Gloucester Presents**

**Paws on Patrol**



🐾🐾🐾🐾🐾🐾🐾🐾🐾🐾🐾🐾🐾🐾🐾🐾🐾🐾🐾🐾🐾🐾🐾🐾

Safer Gloucester Partnership  
Herbert Warehouse  
Gloucester Docks  
GL1 2EQ

Tel: 01452 396984  
Email: [cdpartnership@gloucester.gov.uk](mailto:cdpartnership@gloucester.gov.uk)  
[www.saferigloucester.co.uk](http://www.saferigloucester.co.uk)  
Page 29



## City's New Cameras Keep Us Safe

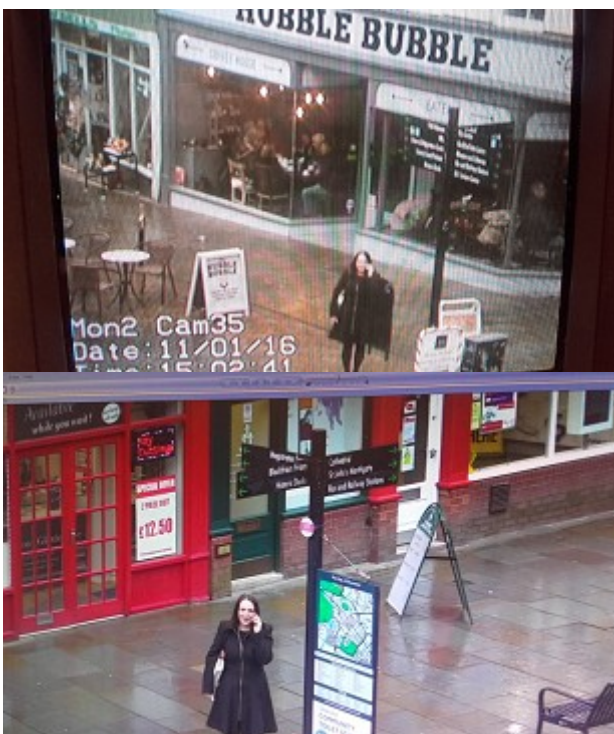
Working in partnership with BT, the Gloucester City Council rolled out the new CCTV cameras in September 2015, as part of an upgrade project with the installation of free Wi-Fi and improved 4G connectivity in the city centre

The upgrades saw 50 new high-definition CCTV cameras installed in the heart of the city centre and Gloucester Park, along with a new camera control room.

One of the major benefits of the new camera system is the improvement to image quality, as well as 360 degree movement capabilities, which allows camera operators to follow suspects as they move through the streets.

Following a number of successes, Police chiefs praised the new CCTV system as being a decisive part in the prosecutions.

PC Mark Mansfield, licensing officer for the city, said; "It's stunning. This CCTV is crystal clear, not like the pixelated images of old. Night time is now like daytime thanks to these facilities. They're already helping us identify people linked to incidents and I'm sure will help us get results we wouldn't have otherwise got in the future."



Councillor Jennie Dallimore, cabinet member for communities and neighbourhoods, (pictured with an old camera above and new camera below), said; "When we put the new CCTV systems in place in September, we wanted to make sure people that are working, studying, shopping or socialising in the city felt safe on our streets.

"These state of the art systems help to keep crime levels low and improve safety in Gloucester by acting as a deterrent to any potential criminals.

"We want Gloucester to be a safe and welcoming place for people to live, work and visit. Working alongside the Police, we're helping to make that a reality."

## Safer Internet Day—9th February

Safer Gloucester will be working to promote safer internet use for all. The top tips for Safer Social Networking can be downloaded from the Safer Gloucester website <http://goo.gl/V5sWtc>

The Child Exploitation and Online Protection Centre also have some really useful advice for children young people, parents and teachers—[www.thinkuknow.co.uk](http://www.thinkuknow.co.uk) . They have a You Tube Channel with a new resource "Nude Selfies - What Parents and Carers need to know" helping parents to understand why young people create and share nude images.

## Drug and Alcohol Awareness

Safer Gloucester will be joining Turning Point to share advice on how to stay safe when using Gloucester's vibrant night time economy.

Turning Point will also be joining us at several community events throughout the summer with advice on substance misuse and harm reduction—check events at [www.safergloucester.co.uk](http://www.safergloucester.co.uk) .

To find out more about Turning Point's services see <http://www.turning-point.co.uk/>

## Restorative Gloucestershire

Restorative Gloucestershire is a group of statutory, non-statutory and voluntary sector partners who have joined together with the aim of offering all people who come into contact with the Criminal Justice System, or who come into conflict in the community, an opportunity to participate in a restorative intervention.

Restorative justice is a process by which offenders can communicate with their victims and agree a resolution rather than going through the courts. This often involves a face to face meeting and is designed to help the victim achieve closure on the incident and for the offender to empathise with the victim as well as to accept responsibility for their actions and apologise. In theory any crime can be at least partially resolved by means of restorative justice or community resolution as it is sometimes known.

The victims of the crime have to agree to undertake the process and can be given compensation by the offender as a way of resolving the crime.

Restorative practice can involve both proactive approach to preventing harm and conflict and activities that repair harm where conflicts have already arisen.

Where the latter is required, a facilitated restorative meeting can be held. This enables individuals and groups to work together to improve their mutual understanding of an issue and jointly reach the best solution. In many cases, a less formal approach, based on restorative principles, may be appropriate.

Restorative practice supports people to recognise that all of their activities affect others and that people are responsible for their choices and actions and can be held accountable for them. It enables people to reflect on how they interact with each other and consider how best to prevent harm and conflict.



## Volunteer Restorative Practice Facilitators Needed in Gloucestershire

ARE YOU A GOOD LISTENER, NON JUDGEMENTAL AND A FAIR MINDED PERSON WHO WOULD LIKE TO MAKE A POSITIVE CONTRIBUTION TO YOUR COMMUNITY?

Please contact: [contactus@restorativegloucestershire.co.uk](mailto:contactus@restorativegloucestershire.co.uk)

## Project Argus Training

In December, Safer Gloucester hosted a multi media terrorist attack simulation that allowed licensees from the night time economy to consider decisions about what they and their staff might need to do in helping to prevent and survive a terrorist attack, or other catastrophe like flooding, fire, explosions or major disaster.

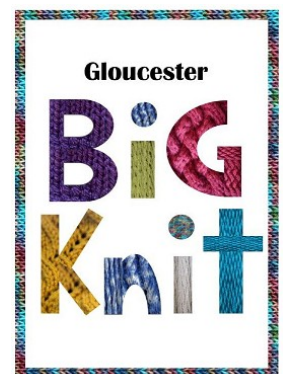
This training is to be repeated for retailers in the city centre at 9am on Tuesday February 9th. Invitations have been sent to the city centre shops but is open to any retailers in the city. The event is free to attend but bookings do need to be made by telephone: 01452 396984 or email: [cdpartnership@gloucester.gov.uk](mailto:cdpartnership@gloucester.gov.uk) . Bookings will be taken on a first come first serve basis.

## Do You Have Any Spare Wool?

The big Knit is a group of people who meet at 12 noon each Friday at the Guildhall Arts Centre to enjoy knitting.

In 2015 the Big Knit knitters created over 300 items which were donated to local charities.

Their success means that they are now short of wool in order to continue. If you have any spare wool, please take it to the Guildhall and place it in the wheelie bin at the top of the stairs.



## Gloucester Best Bar None 2015

Each year Best Bar None hosts a national awards ceremony at the House of Lords, inviting the coordinators and winners from each active scheme.



A series of awards are presented at this event and Gloucester (who accredited 15 new premises in the first year,) has reached the finals in the Best New Scheme category.

The first stages of the judging was completed by Kate Nicholls (CEO of the ALMR and BBN Board Director), and Katie Mackie (External Corporate Affairs Manager for Molson Coors, one of BBN's headline sponsors) and then Robert Humphreys (BBN Chair), Cmdr. Simon Letchford of the Metropolitan Police (NPCC Alcohol lead), and Sue Brown, a journalist with the Mail on Sunday, met to make the final decision as to who will be winning the Best Overall Scheme award, The Best New Scheme award and the Most Innovative Scheme award.

The reception will take place on 2nd February and will be attended by the scheme winners, coordinators and adjudication panel.

## Designated Driver Scheme

Safer Gloucester was pleased to support the Licensed Victualler's Association (LVA) who promoted a "Designated Driver Scheme" throughout December. If a group of people visited a licensed premises and one



member of the group had agreed to be the designated driver, showing the bar staff their keys, they were offered free soft drinks throughout the evening. Several members of the Licensed Victualler's Association took part in the scheme in December and some have continued the good will gesture into the New Year. It is worth asking

the bar staff if you are the Designated Driver on a night out in Gloucester.

## Knife Crime Concerns

On 16<sup>th</sup> December, 81 members of the community came together to take part in the conversation "how can we create a Gloucester where everyone feels safe?"

Safer Gloucester hosted the event following an event held by residents to discuss their concerns of knife and weapon related crime in the City, but also focussing on community safety as a whole.

The event was facilitated by Cormac Russell to



introduce an Asset Based Community Development (ABCD) approach to the concerns raised. ABCD focuses on

"what's strong" rather than "what's wrong" in communities and is a way for residents to identify their assets and use them to be part of the solutions to issues that affect their area.

A city map was covered in suggestions of local assets that could help be part of solutions. At the end of the night, attendees were asked to make a pledge that could help to increase the community's safety and incorporate more young people in the conversation. 50 suggestions were received from attendees who will be invited to explore those ideas further in one to one conversations.

We will also contact more young people to invite them to participate and be part of the overall solutions to residents' concerns.

The next community conversation will be held in April (to be confirmed after consultation with the community) and will see residents and agencies alike updating on what they have done and how we can work together to overcome crime and the fear of crime in our City.

Additionally, in response to public requests, the Police launched a knife surrender on 18th January. If you, or anyone you know, has knives or weapons that they can be encouraged to dispose of, they can be taken to Barton Street Police Station and placed in a secure bin without being asked personal details or any details about the knife.





# SAFER News from the Community Safety Partnership

# GLOUCESTER

PRODUCED QUARTERLY

May 2016

## Paws on Patrol is Back!!

Paws on Patrol is returning to Gloucester Park on Saturday 7th May 2016!

The event will build on the success of previous years and we are delighted to welcome the return of our beloved Police Dogs demonstrating their skills in how they protect us on a daily basis, Meirion Owen and his Collie sheep dogs herding Indian Runner Ducks and LGAgility, all performing in the arena.

Not to mention our novelty Dog Show—it's free to enter and great fun too. It's not Crufts but all the dogs are beautiful in their own way with

categories of: The Cutest Pup, Golden Oldie, Prettiest Female, Most Handsome Male and Best Rescue. All the winners are automatically entered into the Best In Show.

The event will be opened at 12 noon by the Right Worshipful Mayor of Gloucester, Sebastian Field and the timetable for the afternoon is as follows:

- 12.15 Police Dog Display including Paws on Patrol mascots Ace and Holly and their friends Ellie, Stella and newly qualified Quest
- 13.10 Dog Agility Display LG Agility
- 13.45 The Quack Pack entertaining display of trained sheepdogs herding Indian Runner Ducks
- 14.25 Heelwork to Music Display—Ali Magic
- 15.00 Free to enter Novelty Dog Show
- 16.00 The Quack Pack
- 16.30 Police Dog Display

And if you don't like dogs, there are lots of fun activities to enjoy, including lots of interesting stalls—see page 2 for more details—barbeque, icecreams, bouncy castles, face painting, archery and football, including the exciting bubble football where you are harnessed into an inflated ball with your legs sticking out to allow you to run around – it's great fun!

**Paws On Patrol!**

- ★ Meet the Police Dogs—See them in Action! ★
- ★ The Quack Pack (duck-herding sheepdogs!) ★
- ★ Novelty Dog Show ★ Training Tips ★
- ★ Dog Agility ★ T cup rides ★
- ★ Face Painting ★ Bouncy Castles ★ Barbeque ★
- ★ Fire Engine and Police Vehicles ★ Dog Grooming and Beauty Tips ★
- And lots more to see and do!

**SUPPORTED BY...**

For more information visit [www.safergloucester.co.uk](http://www.safergloucester.co.uk) or call 01452 396984

**SATURDAY MAY 7<sup>TH</sup> FROM 12-5PM**  
**IN GLOUCESTER PARK**

SAFER GLOUCESTER



Safer Gloucester Partnership  
Herbert Warehouse  
Gloucester Docks  
GL1 2EQ

Tel: 01452 396984  
Email: [cdpartnership@gloucester.gov.uk](mailto:cdpartnership@gloucester.gov.uk)  
[www.safergloucester.co.uk](http://www.safergloucester.co.uk)  
Page 33



## Paws on Patrol 2016

Currently the stands and attractions to be found at Paws on Patrol on 7th May are:

- ◆ Safer Gloucester
- ◆ Police Dog Section with Paws Mascots Ace and Holly
- ◆ Gloucester Police Fingerprinting
- ◆ The Quack Pack
- ◆ The Lady and The Tramp Grooming Salon and Spa
- ◆ Doggie Photobooth
- ◆ Gloucestershire Fire and Rescue Service
- ◆ Serve On Rescue Service
- ◆ Aston Project and Great Expectations
- ◆ LG Agility
- ◆ Barking Bistro and Bakery
- ◆ Cheltenham Animal Shelter with Have a Go Agility
- ◆ Dogs Body Canine Massage Therapy
- ◆ Dogs For Good
- ◆ Kidney Research
- ◆ SPA Veterinary
- ◆ The Kennel Club
- ◆ Victim Support
- ◆ Lead on Pets
- ◆ PAT Therapy Charity and Space Dogs
- ◆ Lifelink/Handylink
- ◆ First4Castles Inflatables
- ◆ T Cup Rides and Games
- ◆ Guide Dogs for the Blind
- ◆ Teckels Animal Sanctuary
- ◆ Rileys German Shepherd Dog Rescue
- ◆ RSPCA
- ◆ Sassy Pets Accessories
- ◆ Rainbow's Facepainting
- ◆ Kingfisher Treasure Seekers
- ◆ Gloucester Samaritans
- ◆ Acers Pets
- ◆ Brandon Trust
- ◆ Friendship Café Barbeque
- ◆ Friendship Café Archery
- ◆ Increase the Peace
- ◆ Tigers Together/MY:UK Football Tournament
- ◆ J M Sports Events Bubble Football
- ◆ Sue Ryder Jams and Pickles

- ◆ Turning Point
- ◆ South West German Dog Rescue
- ◆ Angel Treasure Trove
- ◆ Charlie's Community Cancer Support
- ◆ James Hopkins Trust
- ◆ 2gether NHS Mental Health Foundation Trust
- ◆ Tartaglia's Ice Cream
- ◆ Vale Wildlife Hospital
- ◆ Utility Warehouse
- ◆ Secret Garden Nursery
- ◆ Vets4Pets

....and keep checking for more updates—it promises to be a great day!

If you have any friends or relatives who are not members of Paws on Patrol, please encourage them to come along on 7th May and become a Patroller!



## Competition Time

Safer Gloucester held a competition for local children to design their own Hero Dog and send their interpretations for judging in order to win a place in the arena on 7th May to assist the Police Dog Handlers command the Police Dogs.



Our picture shows Sam, Joe, Holly and Allison working hard on their entries for the Hero Dog competition whilst at Charlie's Children's Holiday Activity Group.

## Stop Loan Sharks!

### A loan shark lends money illegally.

They are illegal because:

- ◆ All lenders must be licensed by the Office of Fair Trading. Loan sharks are not.
- ◆ All lenders have government agreed standards for money collection. Loan sharks do not.
- ◆ Legally all loans must have paperwork outlining charges, the amount you borrowed and the amount you need to repay. Loan sharks do not provide this.

### How can you tell if you have borrowed money from a loan shark?

Loan sharks often:

- ◆ Take your benefit or bank card as security on the loan
- ◆ Don't tell you when you will finish paying
- ◆ Increase the amount you owe even if you are making regular payments
- ◆ Threaten or use violence to get money from you

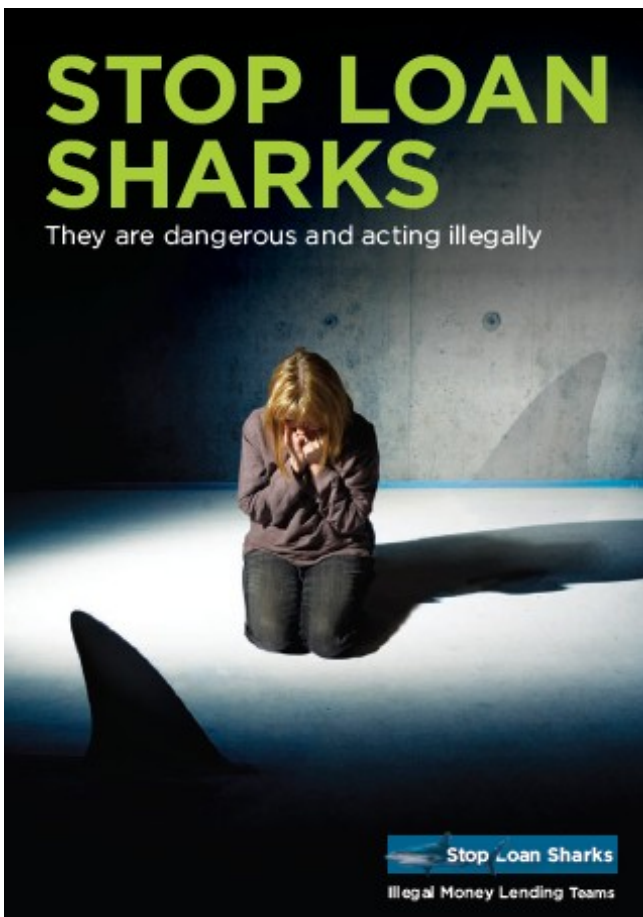
If you have borrowed money from a loan shark, you haven't broken the law—they have.

To report them in confidence:

Call 0300 555 222

Text 'loan shark' and details to 60003

Email [reportloanshark@stoploansharks.gov.uk](mailto:reportloanshark@stoploansharks.gov.uk)



## City Safe Birthday Celebrations

On 1st May 2016, City Safe will celebrate the second anniversary of its launch. This is a significant milestone for the scheme because it is now self-financing, which was the requirement of the Police and Crime Commissioner in 2014 when funding over 2 years was awarded to City Safe.

There are currently 130 members: 110 in Gloucester and 20 in Stroud. City Safe works with local licensees and traders to use "Yellow Cards" to deal with anti social behaviour in the city centre. If anyone is given 2 yellow cards they are automatically "Red Carded" and banned from entering any member premises for 12 months.

In the last two years, 867 yellow cards have been issued and 108 people excluded. At the present time, there are 87 people excluded.



## Spring Gardening

Spring has arrived, together with the spring flowers, blossom and lighter evenings.

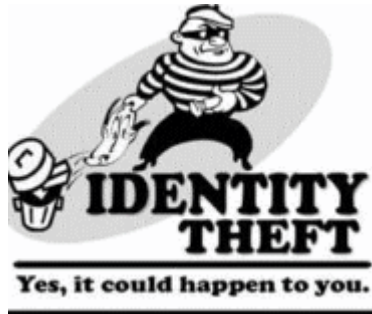
As we venture out into the garden again, please remember that burglars are often opportunists, gaining entry to our homes through open doors or windows. Remember to keep them locked, especially the front door when you are in the back garden.

Always close and lock your downstairs and easy reach windows when you go to bed or pop out - even for a short while.

Also, make sure you always secure your gardening tools and ladders inside your shed or garage when they are finished with. Unsecured, they can be used as tools to break into your home.

## Protect Your Identity

Remember—recycle your waste paper not your personal details. Unwanted mail, credit offers and bills all contain enough data about you to potentially steal your identity. Shred it! Tear it! Protect it! Recycling is good but keep it safe.



## News From The Street Pastors

Gloucester Street Pastors celebrated their 6th birthday at their Annual General Meeting on 4th March. Alastair Sammon, the organisation's Chair, reported that in 2015/16, the Street Pastors had helped 873 people, given out 365 pairs of flip flops and 334 bottles of water, and picked up 2,178 bottles left lying around that could have been picked up and used as weapons.

Most of the help went to vulnerable people who had consumed too much alcohol. The Street Pastors sobered them up with time and water, got them up on their feet, phoned a friend or a relative, got them to a taxi, or accompanied them home.

They diffused aggressive situations, usually by waiting around where they could be clearly seen by those involved and were even told by one young woman that she felt that their presence had prevented her from being raped.

Safer Gloucester would like to extend its gratitude to all the street pastors who voluntarily give of their time to patrol the centre of Gloucester on Friday and Saturday nights.



## Free Safe & Well Checks

We will complete a thorough safety check of your property, covering a number of topics, making you as safe as possible.



To receive your **FREE** Safe and Well Check at a convenient time to you

**Freephone:**

**0800 1804140**

or visit: [www.glosfire.gov.uk](http://www.glosfire.gov.uk)



**In event of fire, remember:  
Get Out, Stay Out & Call The Fire Service**

[www.glosfire.gov.uk](http://www.glosfire.gov.uk)

**Gloucestershire**  
COUNTY COUNCIL

## PCC Elections

The Gloucestershire Police and Crime Commissioner Elections are on 5th May 2016 alongside the local council elections.

Candidates are:

Barry Kirby—Labour

Martin Surl—Independent (Current PCC)

Will Windsor-Clive—Conservative



## Street Beggars and Homeless

Throughout the Spring and Summer, Gloucester has seen a dramatic increase in complaints from members of the public about beggars and street homeless people in the city centre.

Gloucester City Council has adopted a “Safe and Attractive Street Policy” which covers issues of street drinking, rough sleeping, begging and legal highs. This policy follows an engage, support and enforce structure with help from StreetLink, Project Solace, a new city centre police team and Gloucester City Council. At the present time, focus is on begging issues.

The beggars are all being addressed individually and if they are found to be homeless and/or in need of support to address a drug or alcohol habit, or health issues, they will be helped initially by StreetLink and referred to the appropriate support agency to help them. Sleeping on the streets is neither healthy nor safe.

Many of those begging in Gloucester are not homeless and are receiving the appropriate benefits. Some are operating in groups to obtain money to purchase drugs.

Monitoring of the current begging situation is happening daily. We have seen some positive action already, but we rely on reports from

local businesses and members of the public to help us direct resources.

If you have concerns regarding somebody sleeping rough please report to Streetlink by calling 0300 500 0914, or via their website at [www.streetlink.org.uk](http://www.streetlink.org.uk). Streetlink also have a smartphone app, where reports can be made directly. Search for “Street Link” in the app store. Any information that you send will be treated in confidence.

A poster for Gloucestershire Constabulary Open Day. The poster features a photograph of two police officers in uniform, one male and one female, smiling at each other. The text on the poster includes: "Gloucestershire Constabulary OPEN DAY", "Saturday 17 September 2016 10am - 3pm", "Come and join us at Gloucestershire Constabulary HQ 1 Waterwall's Drive, Quedgeley, Gloucester, GL2 2AN", "Our popular Polloe Open Day is set to be bigger and better than ever before, with new attractions and demonstrations to inform and entertain you.", "For more information visit our website www.gloucestershire.police.uk", and "Entry is free, there is disabled parking on site and general parking at the nearby Park-and-Ride". The poster is surrounded by a decorative border of yellow stars.

Gloucestershire Constabulary  
**OPEN DAY**  
Saturday  
17 September 2016  
10am - 3pm  
Come and join us at  
Gloucestershire Constabulary HQ  
1 Waterwall's Drive, Quedgeley,  
Gloucester, GL2 2AN  
Our popular Polloe Open Day is set to be bigger and better than ever before, with new attractions and demonstrations to inform and entertain you.  
For more information visit our website  
[www.gloucestershire.police.uk](http://www.gloucestershire.police.uk)  
Entry is free, there is disabled parking on site and general parking at the nearby Park-and-Ride

Safer Gloucester Partnership  
Herbert Warehouse  
Gloucester Docks  
GL1 2EQ

Tel: 01452 396984  
Email: [cdpartnership@gloucester.gov.uk](mailto:cdpartnership@gloucester.gov.uk)  
[www.safergloucester.co.uk](http://www.safergloucester.co.uk)





## Paws on Patrol 2016



Safer Gloucester is delighted to report that another successful event was held in Gloucester Park on May 7th. The sun shone for most of the afternoon and even when the rain came, it did not deter our hardened Patrollers!

The police dog handlers were in top form as were their trusty canine stars. Thanks go to our brave, newly re-elected Police and Crime Commissioner for running from and being caught by PD Ace (our Paws on Patrol mascot).



Prior to the event, Safer Gloucester held a competition for young people to design and draw their own “hero” dog.

Competition winners Honie Mae (pictured with family) and Holly, assisted Dog Handler PC Rich Hunt with his displays, giving bold commands to the dogs in action.



Once again we were pleased to welcome LG Agility to the arena to



show the skills of the highly trained dogs—they were amazing.



We were also delighted to welcome back to the arena Meirion Owen and The Quack Pack. Meirion’s wonderful Border Collies herded the ducks around the arena in a very amusing demonstration, involving children from the audience.

The dog show attracted various gorgeous dogs of all ages and sizes, many of whom had witty stories to share with the crowd. Some categories had 60 entries—what a difficult task for the Sheriff of Gloucester Cllr Jim Beeley and Carol Hutchins from the Lady and the Tramp Grooming Salon and Spa.

As always our grateful thanks go to 2our sponsors, without whom the event would not

**Paws on Patrol would like to thank our sponsors and guests...**












**Thank you!**

take place.

90 new members joined Paws on Patrol on the day. Please remember to report anything you spot in your neighbourhood that is untoward—eg graffiti, fly tipping, excessive litter etc. If you see a crime taking place, please do not get involved to try to stop it; please stand back and get as many details to be a good witness and ring 999.











## Knife Crime

Tragically there have been several incidents of knife crime in the county and Safer Gloucester is very keen to raise awareness of the dangers of carrying knives with young people.

Another new initiative commenced on Saturday 1st October at the Skillzone where twenty young people took part in a workshop to consider not just how dangerous knives are, but also the effects of a fatal stabbing can have on the friends and family of the victim and perpetrator. The event “Your knife or your life” included some first aid and self preservation training and it is planned that it should be repeated every three months.



If you know a young person that you feel would benefit from this programme, please phone the Harm Reduction Office on 01452 907244.

During the afternoon, parents of the young people were invited to come along and discuss any issues that they had concerns about. Items of most concern on this occasion were drug and alcohol misuse and cyber safety.

Further sessions will be arranged in the near future to speak with experts on these issues— watch the Safer Gloucester website [www.safergloucester.co.uk](http://www.safergloucester.co.uk) for information.

We are also working with local communities and creating vital relationships which are allowing us to make better use of activities in local areas, produce educational programmes, and improve communication between adults and young people. It is important for families to talk together and have the conversation that carrying a knife is unacceptable.

To find out more information about the work partners are undertaking to tackle knife crime and raise awareness of the dangers and consequences of carrying a knife, please google:

[goo.gl/MSRTmE](http://goo.gl/MSRTmE) .

**Christmas Crime Prevention!**

**Don't miss the Christmas Crime Prevention Event - Remember to come along to King's Walk on December 7th to meet officers from Safer Gloucester and to collect your free 2017 Crime Prevention Calendar!**



## Stolen Memories

Your home contains all sorts of special memories. If your home is ever burgled, those memories could be stolen. This year, in the run up to Christmas, when the days are getting shorter, take steps to protect your home and keep your memories safe.



Last year during the anti-burglary campaign research was conducted throughout Gloucestershire to find out how secure we keep our homes.

Out of a survey of over 400 people the following results were found:

- Half of us still advertise our empty homes on social media by 'checking in' to other places or posting about being on holiday
- A quarter of us give burglars the tools they need to break in by leaving ladders and tools in our gardens
- Three quarters of us still don't set our burglar alarms at night or if we go out, even if we have them in our homes
- More than a third of us don't routinely put our valuable items out of view of burglars
- One in five of us don't lock our doors every time we leave the house
- A quarter of us don't leave a light on when we go out

Advice and information is available on the Safer Gloucester or Gloucestershire Police websites on how to protect your home but why not, this Christmastime, pledge to look out for our neighbours in 2017? Start the year by speaking to a neighbour you've never spoken to before. Research shows that people who know the names of at least 10 neighbours feel safe!

## Project Solace have moved!

Project Solace, Gloucester's Anti-Social Behaviour Team have relocated to Gloucester City Council Offices in the Herbert Warehouse.

Project Solace tackles ASB where it exists in private tenancies, owner occupied property and public open space. The team is made up of officers from the Police and Gloucester City Council.

To find more about Project Solace and/or the referral criteria google: [goo.gl/bLcqZb](http://goo.gl/bLcqZb) If you wish to make a referral ring 01452 396396.



### Be a Clive this Christmas!

Many licensed premises in the city centre will be taking part in the

"Be a Clive" campaign to be launched on 1st December.

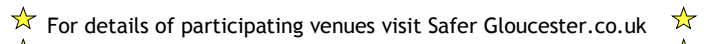
Drivers will be offered free soda if they show their car keys at the bar.

Participating venues will display the window sticker and poster below.



The initiative will form part of the Gloucestershire Road Safety Partnership's Christmas campaign but this one will continue way beyond the festive season—Be a Clive—Don't Drink and Drive!

For details of participating venues visit [Safer Gloucester.co.uk](http://Safer Gloucester.co.uk)



## Barton and Tredworth Cultural Fayre

Despite the downpour of rain and the howling wind on 20th August, the Barton and Tredworth Cultural Fayre still went ahead, almost as planned.

It was too windy to risk gazebos and marquees in St James' Park so everyone moved furniture and equipment, to hold the fayre inside St James' Church. Space was limited so unfortunately we had to make some frantic phone calls to cancel some of the information stands but with the platform at the front of the church there was an excellent stage area for all our performers and there was a usual selection of gorgeous cultural food to sample and enjoy. This year, children made hats and head dresses judged in a competition by The Sheriff of Gloucester, Cllr Said Hansdot.

The Cultural Fayre is a great community event, planned by members of the community and enjoyed by residents from many different cultures in the area.

Thanks go to the sponsors: Gloucestershire Police and Crime Commissioner, Gloucester City Homes, Sainsbury's, Barton and Tredworth Neighbourhood Partnership, Gloucestershire Constabulary and the Barnwood Trust.



## Advice from Glos Fire and Rescue



Check your Christmas tree lights carry the British Safety Standard sign

Never place candles near your Christmas tree or materials that can catch alight easily



Test your smoke alarm regularly and only remove batteries when replacing them

Most fires start in the kitchen. Avoid leaving a cooker unattended. Avoid cooking when under the influence of alcohol



Make sure your family and visitors know how to escape in an emergency

Decorations can burn easily so don't attach them to lights or heaters



Make sure cigarettes are put out properly

Keep candles, lighters and matches out of children's reach. Never leave burning candles unattended



Never overload electrical sockets. Always switch Christmas lights off and unplug them before you go to bed

Take care around open fireplaces as clothes can catch fire



Take time to check on older relatives and neighbours this Christmas as they are at greater risk from fire

## Street Beggars and Homeless

In the August edition of the Safer Gloucester newsletter, we reported on the “Safe and attractive street policy” which had been adopted in Gloucester following many complaints from members of the public about beggars and street homeless people in the city centre.

The Policy employs an “engage, support, enforce” plan to address the issue of begging and homeless people.

Gloucester City Council’s community safety team and the city centre police team worked together with partners to help beggars and rough sleepers to access the help they needed. Letters of concern have been issued to beggars to provide advice and make referrals to organisations who can help people get off the streets. Any who have continued to beg have been issued with warning letters saying that they must engage with the support that is available. Any who persistently beg will face criminal action.

Already there have been some successes and some beggars have moved to supported housing enabling them to access appropriate services.

Latest operations report a large reduction of street beggars in the city centre.

Businesses, residents and visitors are encouraged to report anyone they see on the street to StreetLink by calling 0300 500 0914, or via their website at [www.streetlink.org.uk](http://www.streetlink.org.uk) so that they can be helped by outreach workers to access help. StreetLink also have a smartphone app, where reports can be made directly. Search for “StreetLink” in the app store. Any information that you send will be treated in confidence.

Anyone who witnesses begging occurring or are affected by begging related nuisance should report it to the Police using the phone number 101.

## Young People’s Mental Health Advice

The Gloucestershire Clinical Commissioning Group has launched a new mental health advice website for children and young people at [www.onyourmindglos.nhs.uk](http://www.onyourmindglos.nhs.uk)

The website provides information and signposting across a range of topics to help young people who might be struggling with their emotions and difficult situations in their life.

The website will be promoted through schools but please share widely within your families, friends and colleagues.

## Advent Calendar

Don’t forget to log on to the Safer Gloucester website to check the Advent Calendar for a seasonal crime prevention message for each day of December leading to Christmas. From the home page, just click on the icon below and receive your advice on how to stay safe this Christmas.



**Safer Gloucester would like to wish all our readers a Very Happy and Safe Christmas and New Year**